



Rugged ultrasonic flowmeter with 3G/GPRS communications and long battery life

PrimeFlo3 is designed for semi-permanent installation on water networks where permanent flowmeters are not available. Integral data logging and remote communications provide on-line data availability for improved water management.

Benefits

- Non-invasive flow measurement on pipe sizes 25 - 2500mm (one pair of sensors only)
- Integral pressure transducer
- Remote communications via 3G or GPRS
- Daily on-line data availability via *PrimeWeb*
- Step testing mode
- Long battery life
- Rugged to IP67 (lid closed)
- Integral pipe wall thickness gauge option



Operation

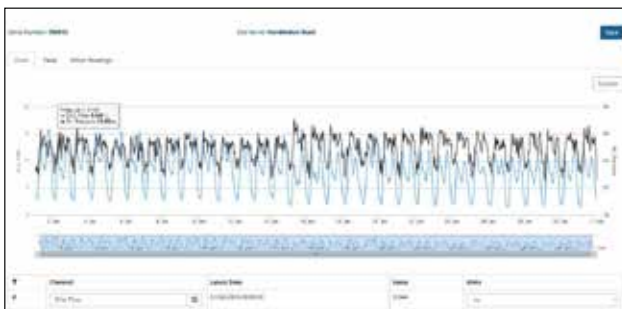
Transit time technology uses the principle that ultrasonic waves travelling in the direction of water flow move faster than those travelling against the water flow. The resultant difference in transit time is directly proportional to the flow velocity. The *PrimeFlo3* is supplied complete and ready for measurements on all types of metal, concrete and plastic pipes.

PrimeFlo3 is a non-invasive flowmeter. This gives the following advantages;

- no head loss
- no water contact
- no contamination
- no process shut-down

Applications

- Network flow and pressure surveys
- Calibration of network models
- Sectorisation / DMA set-up
- Minimum night-flow measurement
- Water balance
- Verification of existing fixed meters



Flow + pressure data available on-line via *PrimeWeb*



Rugged ultrasonic flowmeter with 3G/GPRS communications and long battery life

Technology

PrimeFlo3 utilises advanced digital design to meet the practical needs of measuring flow-rate and pressure data. It has a very long battery life enabling use for semi-permanent installation where permanent flowmeters have not been installed. The ruggedized ABS case is water ingress protected to IP67 (lid closed).

Technical features

- Flow velocity;
 - Range; 0.01 – 25 m/s
 - Resolution; 0.25mm/s
 - Repeatability; 0.15% of measured value
 - Accuracy (mean); $\pm 0.5\%$ of measured value
- Pressure;
 - Range; 0 – 20 Bar
 - Accuracy; $\pm 0.1\%$ of range
- Measurement interval 1 second – 1 hour
- Data logger memory; 2 Gbyte
- Battery life (with 10 minute measurement interval and daily data transmission)
 - internal battery = 6 months
 - XiLog+ external battery pack = 2 years



Online data availability

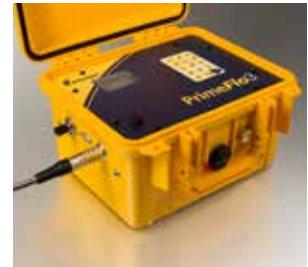
PrimeFlo3 data can be managed using the *PrimeWorks* water data management software. Data is also available via the *PrimeWeb* on-line network monitoring facility giving remote access to observe changes in network conditions, water usage, nightlines, etc. *PrimeFlo3* data can be displayed via Google Maps*.



Network hydraulic data available on Google Maps*

PrimeWeb

Water network on-line data access



Products

PrimeFlo3 with 3G / GPRS communications (inc's 5 years airtime and data delivery)	RXG 703
PrimeFlo3 with 3G (USA) communications (inc's 5 years airtime and data delivery)	RXG 704
Accessories	
Integral pipe wall thickness gauge (for all PrimeFlo3 versions above)	add /G to code above

*Google Maps is a registered trade mark of Google Inc.



Primayer Limited

Primayer House, Parklands Business Park
Denmead, Hampshire PO7 6XP, United Kingdom
T +44 (0)2392 252228 F +44 (0)2392 252235
E sales@primayer.com
www.primayer.com



Information in this document is subject to change without notice.
LIT-PF3-044-1.0