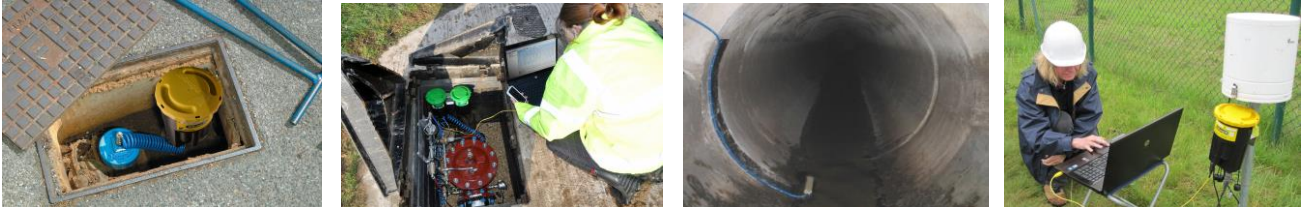


XiLog+ Models + applications

The XiLog+ data logger range is designed for multiple operations in both water distribution and waste water applications. The XiLog+ models, inputs, sensors and

applications are detailed below. Additionally, every XiLog+ has two outputs to provide instrumentation control functionality.



XiLog	Input Channels				Sensors	Applications	
	Flow/Event		Internal Pressure	Analogue			RS485
	Uni-dir	Bi-Dir					
1F	2	1				Electro-magnetic and mechanical meters Combination meters Event sensors	Supply and consumption metering Rainfall, overflow, pump events Alarm Intrusion detection
1P			1			Internal pressure	Water network pressures Hydraulic modelling Pump monitoring Pipeline pressure testing
2i	2	1	1			Internal pressure Flow/event as 1F	Combined XiLog1F&1P applications DMA and zonal monitoring General water network monitoring
2	2	1		1 x ext. pressure 4-20mA or 0-10V		Ultrasonic level Radar level External pressure External depth Flow/event as 1F	Borehole, reservoir, tank, depth DMA monitoring in cold climates Flow at weirs and flumes Sampler control - pollution incidence Tank level, flow input and output
2W				1	1	Doppler Ultrasonic level Radar External depth	Open channel flow Borehole, reservoir, tank, depth Flow at weirs and flumes Sampler control - pollution incidence
3i	2	1	2			2 x Internal pressure Flow/event as 1F	PRV monitoring
9	4	2		3x (4-20mA) 4x(0-1V)		Multiple	All XiLog2 and Xilog2W applications General instrumentation application
Eco	2	1	2			As XiLog+3i	PRV monitoring



Primayer Limited
 Primayer House, Parklands Business Park
 Denmead, Hampshire PO7 6XP, United Kingdom
 T +44 (0)2392 252228 F +44 (0)2392 252235
 E sales@primayer.com
 www.primayer.com

