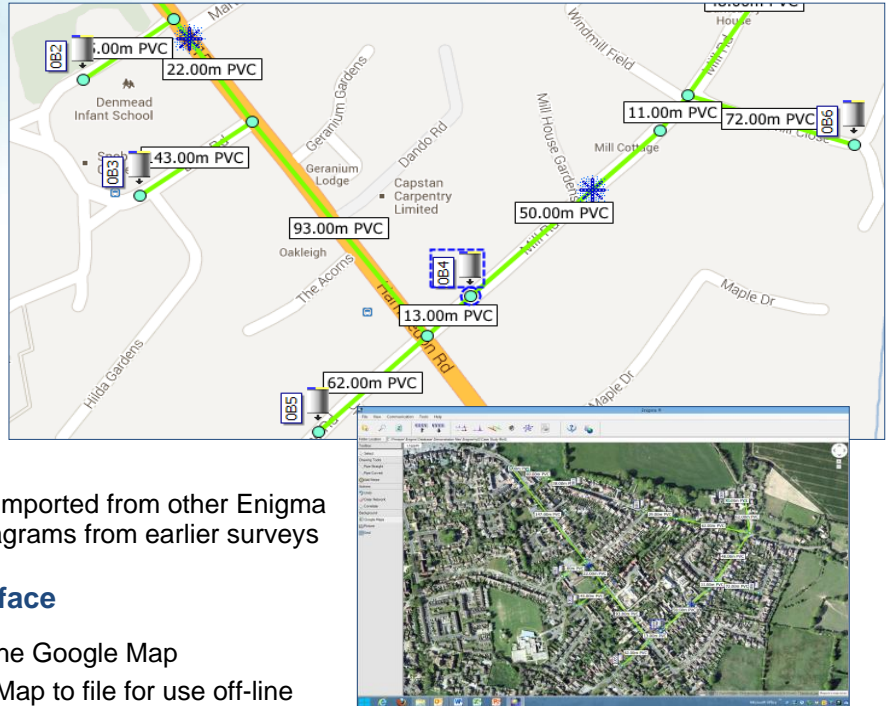


Enigma[®] software enhancements

Technical Note IXD-616-TN Issue 2

Easy entry of pipe schematic details

- Enter pipe network
 - curved pipes
 - pipe junctions
 - position logger before or after pipe position drawn
 - enter pipe details from schematic
- Network diagrams can be drawn independently of Enigma data and imported into Enigma data folders after readback
- Network diagrams can be imported from other Enigma data folders – including diagrams from earlier surveys

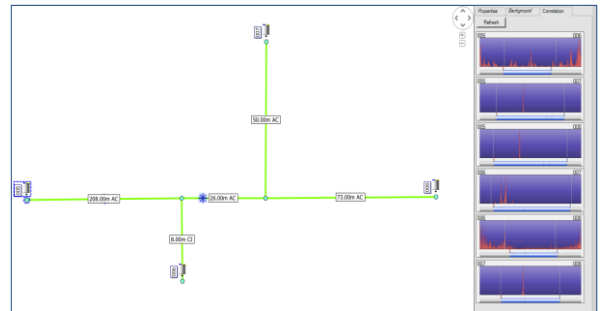


Improved Google Maps* interface

- Pipe network drawn onto the Google Map
- Optional saving a Google Map to file for use off-line

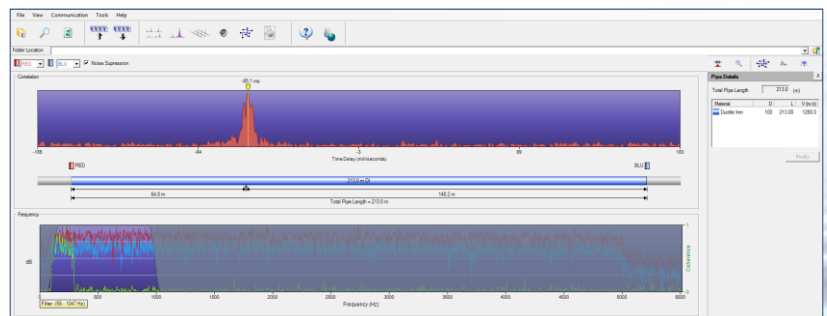
Mapping features to enhance leak location and leak reporting

- Show leak positions on pipe network
- Show positions of 'non-leak' noise
- Listen to leak noise – *click on logger*
- Display correlation – *select pair of loggers*
- Correlation thumbnails displayed with map - *enables visualisation between correlations and logger positions*



Processing Eureka3 data files

Leak noise recordings from Eureka3 can be imported into the Enigma software. This enables correlation post-processing of the noise data to improve the leak location result using the powerful processing features available in the *Enigma* software. It also allows re-evaluation of the noise data in the event of a dry-hole but without the need to re-visit the site.



* Maps courtesy of Google Maps



Primayer Limited

Primayer House, Parklands Business Park
Denmead, Hampshire PO7 6XP, United Kingdom
T +44 (0)2392 252228 F +44 (0)2392 252235
E sales@primayer.com
www.primayer.com



Information in this document is subject to change without notice.