

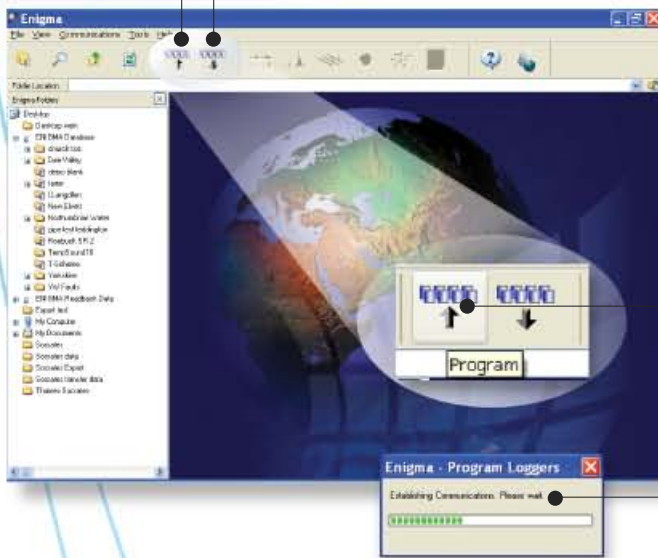
# Enigma® - Programming



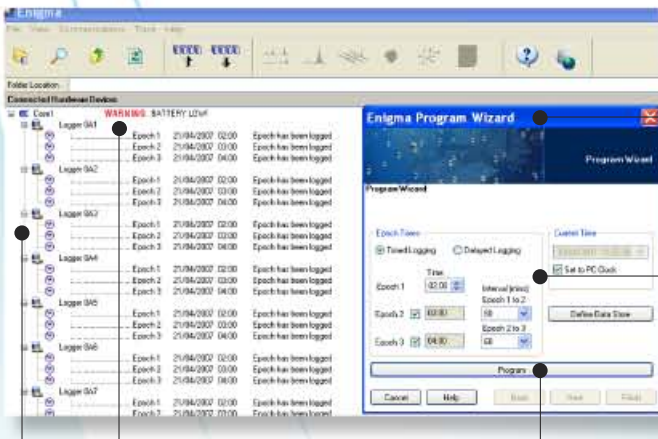
**1** From the PC run the *Enigma* software by clicking on the desktop Icon or programs menu

**2** These two buttons are the logger **Programming** and **Readback** buttons

(The *Enigma* case lid must be closed when Programming or Reading back loggers via the software.)



**3** Ensure the USB communications cable is connected. Click on the **Program** button which will produce the following progress box



**4** The Programming wizard will appear and is usually set for the default use of **Timed Logging** (overnight) as shown

The settings shown are those recommended by Primayer and used by many users

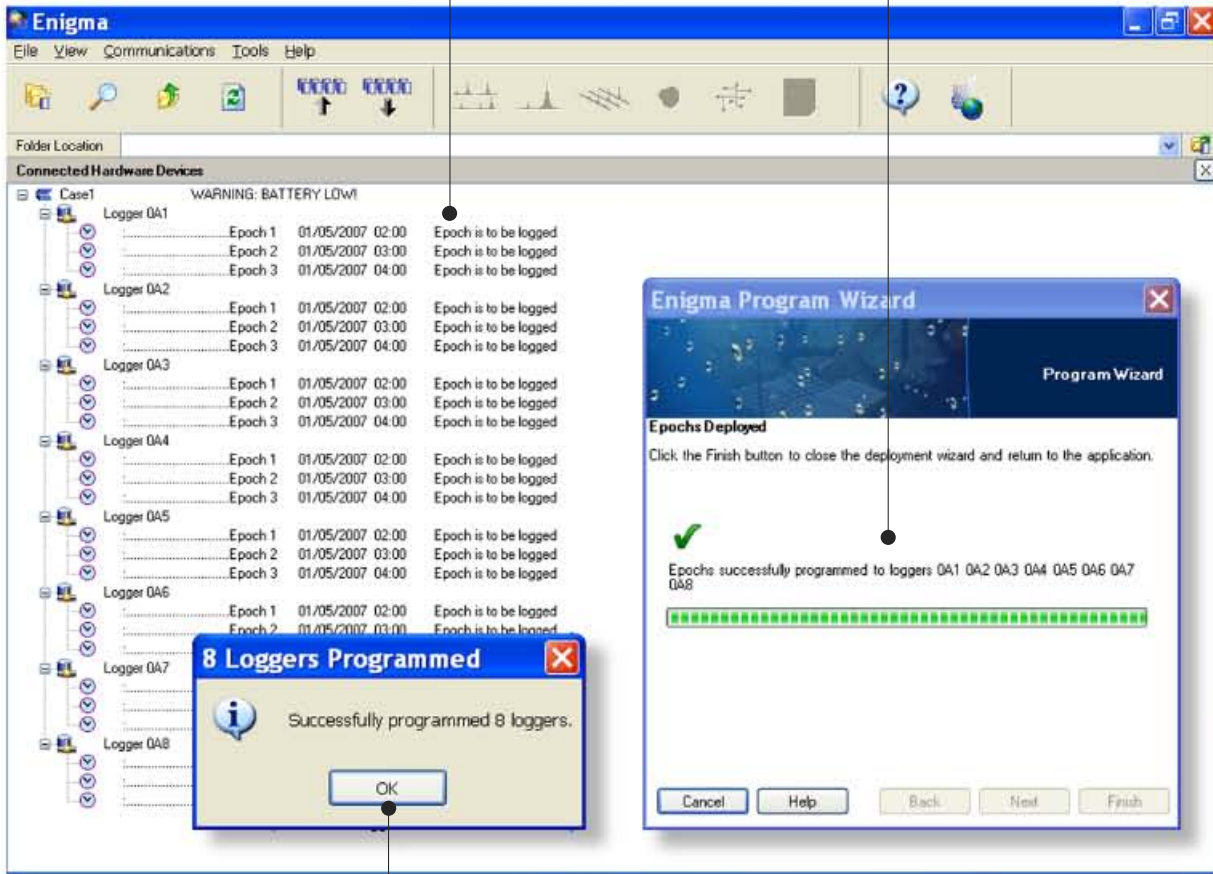
The screen should indicate that it has found all the loggers in the case and give any relevant warnings

**5** Click on **Program**

**Continued on reverse side**

**6**

The Programming wizard indicates the loggers it has found and successfully programmed  
The status screen indicates that the loggers are waiting to record leak noise data



**7**

The loggers have been successfully programmed and are ready for deployment