

# technical update

HELPING USERS TO MAXIMISE THE POTENTIAL OF PRIMAYER TECHNOLOGY

## TU1.1 Phocus.sms - system

### Leak detection - Phocus.sms delivers benefits

- Instant alarms to minimise time the leak 'runs'
- Three overnight sound samples gives high leak alarm confidence
- Attractive 'whole life' costs

### What Phocus.sms offers

Phocus.sms combines the recognised benefits of the Phocus2 noise logger with SMS technology to send an alarm message when leak noise is detected. It provides maximum effectiveness by minimising false leak alarms and reducing water loss in a cost-effective way.

### SMS technology

Use of SMS technology is a major step forward in tackling leakage. Alternative systems have relied upon operators regularly driving by the installed loggers. This means a lot of resource is expended and delays can result in recognising leaks. As the labour and capital expenses are ongoing the true cost of ownership of such systems is high as compared to Phocus.sms.

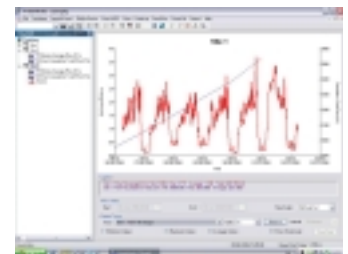
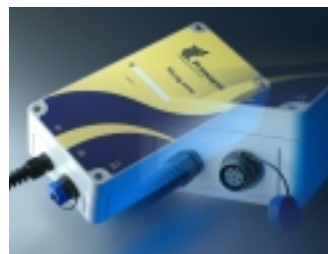
Phocus.sms provides instant information direct to the users PC or mobile telephone. Thus less water is wasted and small leaks do not have the opportunity to become more severe fractures of the mains, with the potential for high costs to repair and poor customer service.

provide 15 minute flow rate values, the daily minimum flow rates or daily flow volume data. Furthermore, SMS messaging can be sent daily, weekly or monthly. XiLog.wmr is available in either below ground or above ground models.

### An effective solution for commercial metering

The system offers a cost effective solution to the monitoring of customer meters, whether those defined as key/critical, or in a more widespread application. The quality and accessibility of important data is much improved.

This can improve efficiency, give a better service to the customer and added value from the information collected; whether for rapid billing, customer analysis, leakage monitoring, operational tracking or system modelling.



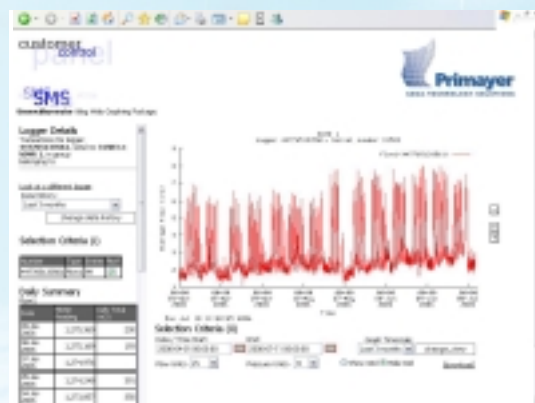
[sales@primayer.co.uk](mailto:sales@primayer.co.uk)  [Click Here for further information](#)

## TU1.3 PrimeWeb - software

### New web software increases accessibility to data

- View and download all XiLog data
- Data available from any PC (with internet access)
- Easy access to key information from any location, any time

PrimeWeb is a new web based service that contains the results of all XiLog (and XiLog.wmr) data on a secure web site. Customers can view/download data from any PC with internet access. No special software is required - only a standard internet browser.



[sales@primayer.co.uk](mailto:sales@primayer.co.uk)  [Click Here for further information](#)

## TU1.2 XiLog.wmr - system

### Remote automatic meter reading using SMS

- Reduced capital and operational costs
- More flexible than traditional AMR data collection
- Rapid data provision to key customers

XiLog.wmr is a low cost variant of the successful XiLog.sms data logger which has been optimised for the remote reading of flow meters. It also can provide additional data for commercial metering, leakage monitoring or general network monitoring.

In addition to the meter index value the XiLog.wmr can optionally



[sales@primayer.co.uk](mailto:sales@primayer.co.uk)  [Click Here for further information](#)

### Contact

United Kingdom  
Tel: +44 (0)23 9225 2228  
Email: [sales@primayer.co.uk](mailto:sales@primayer.co.uk)

France  
Tel: +33 (0)4 72 19 10 62  
Email: [contact@primayer.fr](mailto:contact@primayer.fr)

Malaysia  
Tel: +60 (0)3 5121 2428  
Email: [primayer@streamyx.com](mailto:primayer@streamyx.com)

## TU1.4 Enigma - software

### Software enhancements to assist users

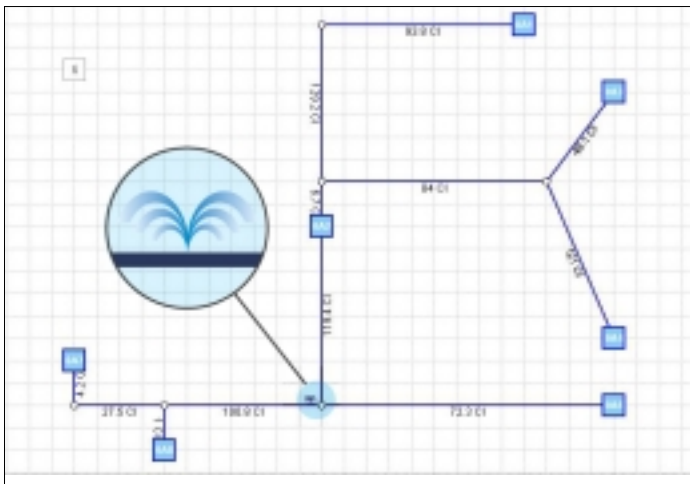
A number of enhancements have recently been made.

- Better capabilities with different screen resolutions
- Leak location markers now able to be shown on network schematics
- Performance and reliability improvements have been made
- Multiple languages.

### Checking software status

The new version of Enigma host software is V1.2. You can check at any time that you are running the latest version by:

- With the software open, press **Help** and then **about**
- Use the link [http://www.primayer.co.uk/current\\_software\\_versions.htm](http://www.primayer.co.uk/current_software_versions.htm)



Leak location Markers.

[support@primayer.co.uk](mailto:support@primayer.co.uk) [Click Here for further information](#)

## TU1.5 Enigma - Best practice

### Operational database proves beneficial to Enigma users.

Enigma combines noise logging and noise correlation into one operation to provide improved operational efficiency. Good practice tips can make a difference for users.

### Useful tip - operational database

- Ongoing efficiency and leak location performance have been shown to benefit from the development of an 'Enigma Database'. This database should hold any past Enigma results and key information about an area, its demand patterns, the characteristics of the water network and other factors relevant to successful leak location activities. This will aid both the planning of deployments to new areas and the re-investigation of an area in the future

### Contact

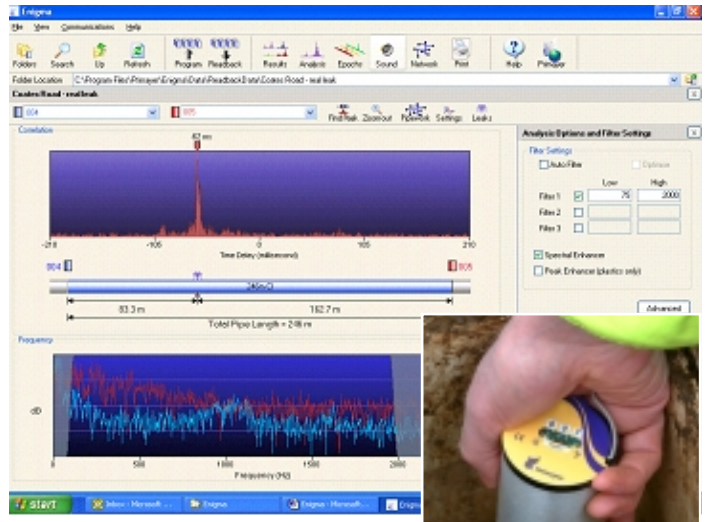
United Kingdom  
Tel: +44 (0)23 9225 2228  
Email: [sales@primayer.co.uk](mailto:sales@primayer.co.uk)

France  
Tel: +33 (0)4 72 19 10 62  
Email: [contact@primayer.fr](mailto:contact@primayer.fr)

Malaysia  
Tel: +60 (0)3 5121 2428  
Email: [primayer@streamyx.com](mailto:primayer@streamyx.com)

[www.primayer.com](http://www.primayer.com) [Click Here for further information](#)

- By saving the Enigma nodal schematic along with database notes it is very easy to return to an area (when recommencing work) with the knowledge already gained
- External noises that can influence leak detection such as air conditioning units, transport systems, electrical vibrations and overnight usage should be noted within the database
- This key knowledge enables the optimum deployment strategy and should minimise the number of detection/location 'sweeps' necessary to achieve a target leakage reduction.



[support@primayer.co.uk](mailto:support@primayer.co.uk) [Click Here for further information](#)

## TU1.6 PrimeWorks - data management software

### Software enhancements to assist users

A number of enhancements have recently been made.

- PrimeWorks now operates with both models of XiLog, including the new XiLog.wmr - Water Meter Reader
- Inclusion of a new tool termed 'SMS Server' which intelligently manages incoming and outgoing SMS messages. This is to ensure that they are interfaced to the correct application - XiLog, XiLog.wmr, or the separate Phocus.sms host software
- Correct operation of event based logging, for use with rain gauges, overflow sensing on tanks and in open channel flow applications and pump on/off sensors.

### Checking software status

The new version of PrimeWorks software is V1.4. You can check at any time that you are running the latest version by:

- With the software open, press **Help** and then **about**
- Use the link [http://www.primayer.co.uk/current\\_software\\_versions.htm](http://www.primayer.co.uk/current_software_versions.htm)

[support@primayer.co.uk](mailto:support@primayer.co.uk) [Click Here for further information](#)